

# Leak Lokator II

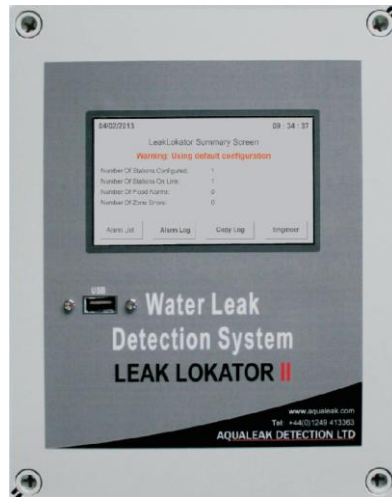
The Leak Lokator II is a sophisticated multi-zone water leak detection system that can monitor up to 500 zones simultaneously in large, multi-floor buildings. With the addition of valve control and relay modules, the unit can also switch shut off valves

## Benefits

- The Leak Lokator is able to monitor up to 500 zones simultaneously in large, multi-floor buildings
- Touch screen technology makes setting and operating easy
- Up to 100 outstations

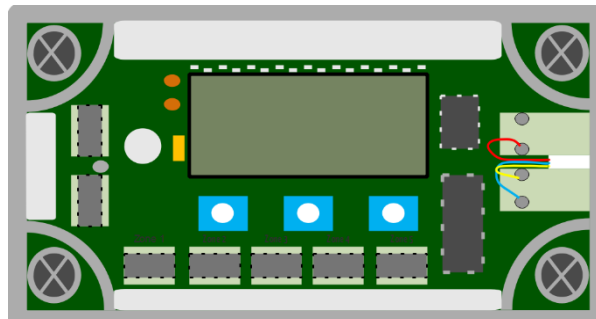
## Main Features

- 5 sensors per outstation
- Sensor and fault diagnostic on each outstation
- 'Find me' feature on all outstations
- All outstations monitored every minute
- Full alarm logging facility, including stamped details of all events and all operators acknowledging alarms
- Event history can be downloaded onto a USB stick
- BMS connection
- MODBUS connection enabling events to be network monitored



Specification	
Max Outstations	100
Max Sensors per outstation	5
Medium	Water
Sensors	Cable/Probe/minipad/Wall Mount
Max Sensor Cable Length	100m
Outputs	Rs485, USBII
Dimensions	240mm x 190mm x 106mm
Weight	2 KG
Operating System	Windows® CE
Alarms	Leak Detected/Line Fault
Product Code (Leaklokator)	LKMS
Product Code (Outstation)	LKOS5
Product Code (Valve Control Module)	LKVCM
Product Code (Valve Relay Module)	LKVRM

## The Outstation



- Up to 5 sensors or cables can be attached to each outstation
- Each sensor cable can be up to 50m long
- Outstations detect open or short circuits
- Reports a fault to a master station
- Find me function energises sounder in outstation for easy tracing of units positioned under floors etc.